

# TamAcryl 2000 ECO

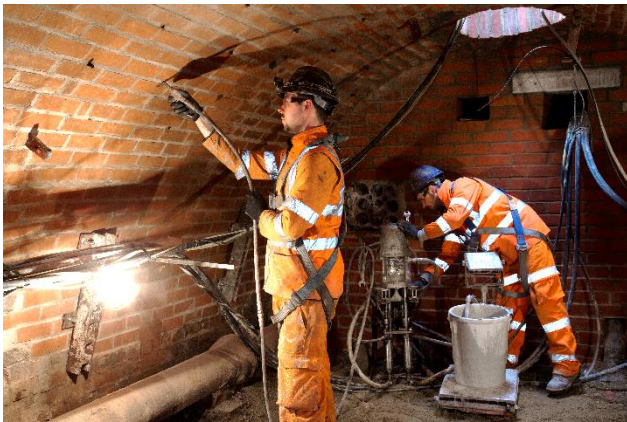


## CONSTRUCTION CHEMICALS

### TECHNICAL DATA SHEET

## Acrylic Injection Gel

### DESCRIPTION



TamAcryl 2000 ECO is a blend of acrylic polymers used in conjunction with an accelerator and catalyst system. Upon mixing of the components, a chemical reaction occurs and a waterproof gel is formed.

TamAcryl 2000 ECO is tested according to EN1504-5 in compliance with CE-marking.

### KEY BENEFITS



- > Ultra-low viscosity
- > Reversible swelling
- > Good chemical resistance
- > Reacts even in the presence of mineral and saline conditions
- > Potable water certified
- > Incorporates anti-corrosion agents

### TYPICAL APPLICATIONS

- > Leak sealing
- > Injection tubes
- > Soil stabilisation
- > Tightening up

### TECHNICAL DATA

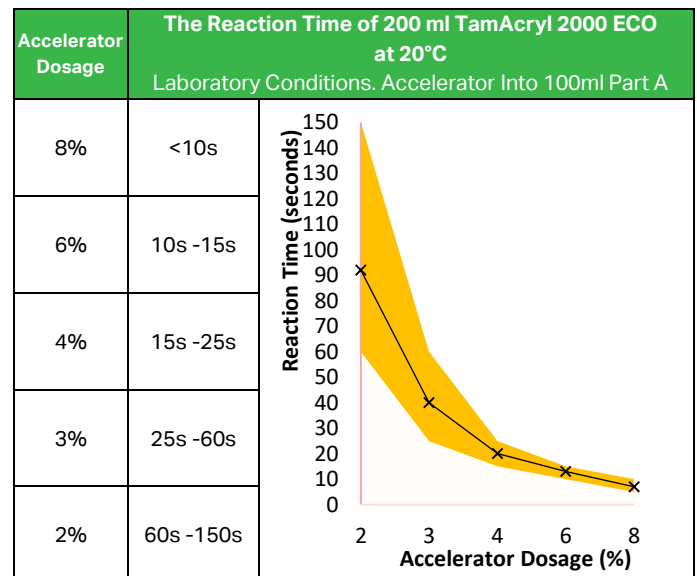
Technical Data	Part A	Part B	Acc	Mixed
Viscosity (mPa·s) EN ISO 3219	30 - 60	1 - 2	10 - 20	≤ 9
Non-volatile Matter (%) EN ISO 3251	40 - 45	6	42 - 45	> 25%
Density (g/ml) EN ISO 2811	1.20	1.06	1.10	1.09

		Volume	Weight
Volume and Weight Change BS EN 14498	Regime A 336 Hours	+48%	+49%
	Regime B 10 cycles	+6%	+6%
Water Tightness BS EN 14068	Water Tight at 2 Bar Water Tight after 500 cycles		

### Reaction Times

The reaction time can be varied to suit prevailing conditions. To ascertain accelerator dosage required:

- > Use two clean disposable containers
- > E.g. plastic cups used in vending machines
- > Pour an equal amount of Part A and Part B into separate containers. Each container should be able to hold the contents of the other
- > Add between 2% and 8% accelerator to the Part A and mix
- > Pour one container into the other
- > Keep pouring the contents between two cups until the material gels
- > For an initial guide, please see the below table or ask your Normet Representative



All technical data stated herein is based on tests carried out under laboratory conditions.



Whilst any information and/or specification contained herein is to the best of our knowledge, true and accurate, we always recommend that a trial be carried out to confirm suitability of the product. Please note regional climatic conditions may cause a variation in the performance of the product. No warranty is given or implied in connection with any recommendations or suggestions made by us or our representatives, agents or distributors. The information in this data sheet is effective from the date shown and supersedes all previous data. Please check with your local Normet office to confirm that this is current issue. Formerly known as TamAcryl 2000.

# TamAcryl 2000 ECO

## Acrylic Injection Gel

### YIELD

1 kg = 0.92 litres

### APPLICATION GUIDELINES

TamAcryl 2000 ECO is injected at a ratio of 1:1 Part A: Part B by volume. Ideally using an appropriate stainless steel twin piston pump, with an additional flush unit or if extremely careful a single component pump could be used. If you need any further information about pumps and accessories, please contact your local Normet Representative.

Cleaning involves using water to remove the resin from the pump components before it sets.

Note: Once the accelerator is added to the Part A it should be used within 24 hours.

### STORAGE

TamAcryl 2000 ECO should be stored at room temperature (min 4°C and max 30°C), kept dry and out of direct sunlight. If these conditions are maintained and the product packaging is unopened, then a shelf life of one year can be expected.

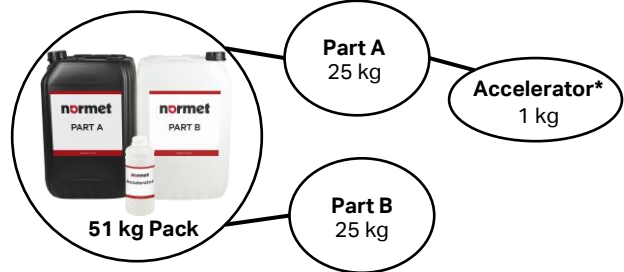
### HEALTH & SAFETY

TamAcryl 2000 ECO should only be used as directed. We always recommend that the Safety Data Sheet (SDS) is carefully read prior to application of the material. Our recommendations for protective equipment should be strictly adhered to for your personal protection. The Safety Data Sheet is available upon request from your local Normet representative.

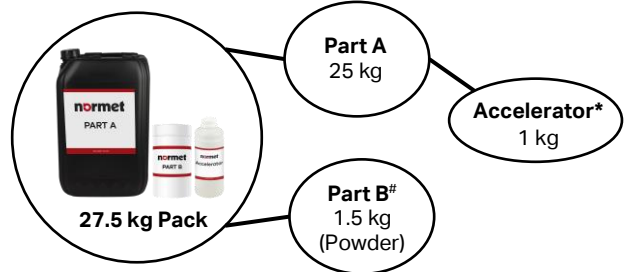
### PACKAGING

TamAcryl 2000 ECO is available in two standard grades:

1) The 51 kg Pack requires no on site dilution of the Part B.



2) The 27.5 kg Pack requires on site dilution of Part B



\*Variable dosage normally 2% - 8% on Part A per volume.

#On-site dilution required. 23.5 kg Potable water to be added on-site.

All packaging options require TamAcryl Accelerator, and more pack size options may be available from your local Normet Representative.

Whilst any information and/or specification contained herein is to the best of our knowledge, true and accurate, we always recommend that a trial be carried out to confirm suitability of the product. Please note regional climatic conditions may cause a variation in the performance of the product. No warranty is given or implied in connection with any recommendations or suggestions made by us or our representatives, agents or distributors. The information in this data sheet is effective from the date shown and supersedes all previous data. Please check with your local Normet office to confirm that this is current issue. Formerly known as TamAcryl 2000.